

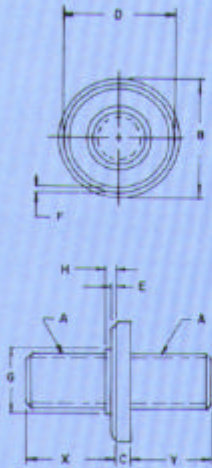
Resistance Weld Screws

GEMP ring-type weld screws were specially designed to assure positive self-centering in the mounting hole, thereby ensuring close tolerances between mounting centers.

A mounting pilot is provided under the head which acts as a self-centering device, causing the screw to fit snugly in the mounting hole.



DOUBLE END				
PART NO.		THREAD	BODY SIZE	
CARBON	STAINLESS	SIZE	LEG 'X'	LEG 'Y'
CS-615-1		4-40	1/20	1/4
CS-615-2	SS-615-2	6-32	1/32	1/4
CS-615-3	SS-615-3	8-32	1/32	1/4
CS-615-4		8-32	1/32	3/8
CS-615-14		8-32	1/32	1/4
CS-615-5	SS-615-5	10-32	1/32	3/8
CS-615-7		1/4-20	1/32	1/2



THREAD	COLLAR			PROJECTION			PILOT	
	DIA.	THK.	CIRCLE	HGT.	DIA.	DIA.	HGT.	HGT.
A	B	C	D	E	F	G	H	
4-40	.250	.047	.194	.011	.018	.107 - .111	.038	
6-32	.250	.047	.194	.011	.018	.133 - .137	.038	
8-32	.312	.062	.238	.015	.024	.158 - .163	.046	
10-32	.437	.062	.350	.015	.024	.184 - .188	.046	
1/4-20	.500	.078	.410	.019	.031	.242 - .248	.054	

NOTES: THREAD LEG 'X': NOT MORE THAN 3 THREADS FROM PILOT.
 THREAD LEG 'Y': NOT MORE THAN 1 1/2 THREADS FROM COLLAR
 ON SINGLE END STUDS LEG 'Y' IS ELIMINATED.
 THREAD CLASS FOR CARBON STEEL IS NC-2A.
 THREAD CLASS FOR STAINLESS STEEL IS NC-2.
 TOLERANCE ON LEGS 'X' AND 'Y' IS -.005 - .010.

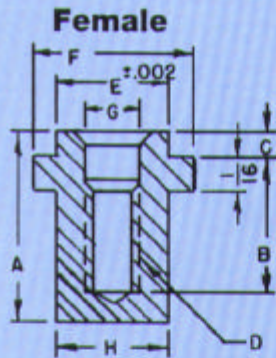


SINGLE END				
PART NO.		THREAD	BODY SIZE	
CARBON	STAINLESS	SIZE	LEG 'X'	LEG 'Y'
CS-715-1	SS-715-1	4-40	3/32	
CS-715-2	SS-715-2	4-40	1/32	
CS-715-3	SS-715-3	6-32	1/32	
CS-715-4	SS-715-4	8-32	1/32	
CS-715-14	SS-715-14	8-32	1/32	
CS-715-5	SS-715-5	10-32	1/32	
CS-715-6		10-32	1/32	
CS-715-7	SS-715-7	1/4-20	1/32	
CS-715-8		1/4-20	1/32	

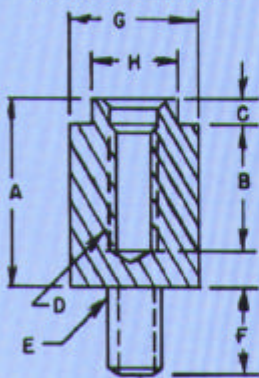
Blind Inserts

GEMP has designed a slim, trim blind insert which has been used in the Electronics industry for over 40 years. All excess material has been removed to provide maximum space for internal assembly without any sacrifice to quality. The new design also allows the inserts to be staked in place without injury to the threads.

GEMP male-female type inserts have also been streamlined and both types meet the requirements of MIL-T-27B standards.



Male-Female



Male-Female Brass

PART NO.	DIMENSION							
	A	B	C	D	E	F	G	H
632-832	.442	.312	.060	6-32	8-32	.312	.312	.192
832-1032	.442	.312	.060	8-32	10-32	.312	.312	.213

Female Brass & Stainless Steel

PART NO.	DIMENSION							
	A	B	C	D	E	F	G	H
901	.353	.218	.062	4-40	164	228	.116	166
901A	.311	.218	.025	4-40	164	228	.110	166
907	.436	.312	.025	4-40	164	228	.116	166
903	.476	.312	.062	4-40	164	228	.116	166
1060	.425	.281	.062	6-32	192	250	.144	200
1060A	.385	.281	.025	6-32	192	250	.144	200
1060B	.515	.375	.062	6-32	192	250	.144	200
1061	.452	.281	.062	8-32	213	281	.166	225
1061A	.410	.281	.025	8-32	213	281	.166	225
1061B	.515	.375	.025	8-32	213	281	.166	225
1061C	.635	.500	.062	8-32	213	281	.166	225
1062	.545	.375	.062	10-32	263	312	.213	.261
1062A	.515	.375	.025	10-32	263	312	.213	.261
1063	.635	.500	.062	10-32	263	312	.213	.261
1063A	.598	.500	.025	10-32	263	312	.213	.261
1064	.575	.375	.090	1/4-20	320	375	.268	.327
1064A	.515	.375	.025	1/4-20	320	375	.268	.327
1065	.635	.500	.090	1/4-20	320	375	.268	.327
1065A	.570	.500	.025	1/4-20	320	375	.268	.327
1066	.570	.500	.025	1/4-20	320	375	.268	.327



Great Eastern Metal Products Company

255 East Second Street, Mineola, New York 11501
 Tel: (516) 747-0818 Fax: (516) 747-6724